

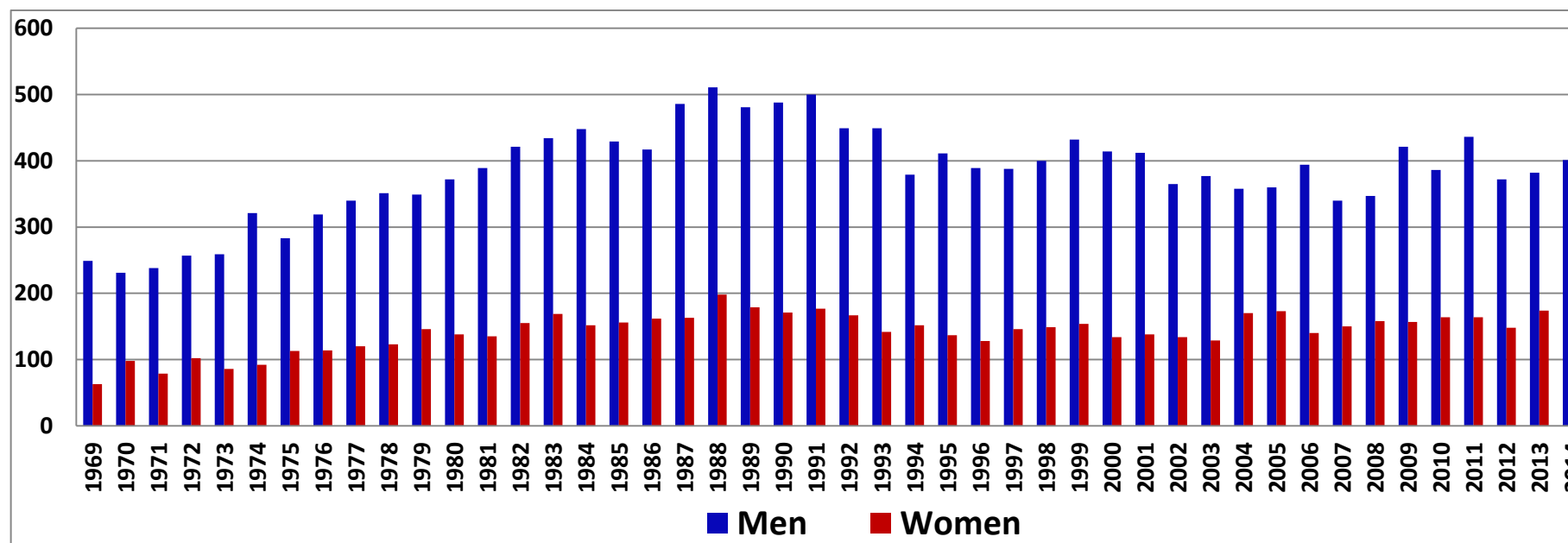
In 2014, there were 548 suicides, including 401 males and 147 females, which corresponds to a rate of 12.2 per 100 000 population, 17.8 per 100 000 men and 6.6 per 100 000 women aged 10 years or above in Norway.

### Number of Suicide Deaths by Sex and Calendar Time from 1970 to 2014

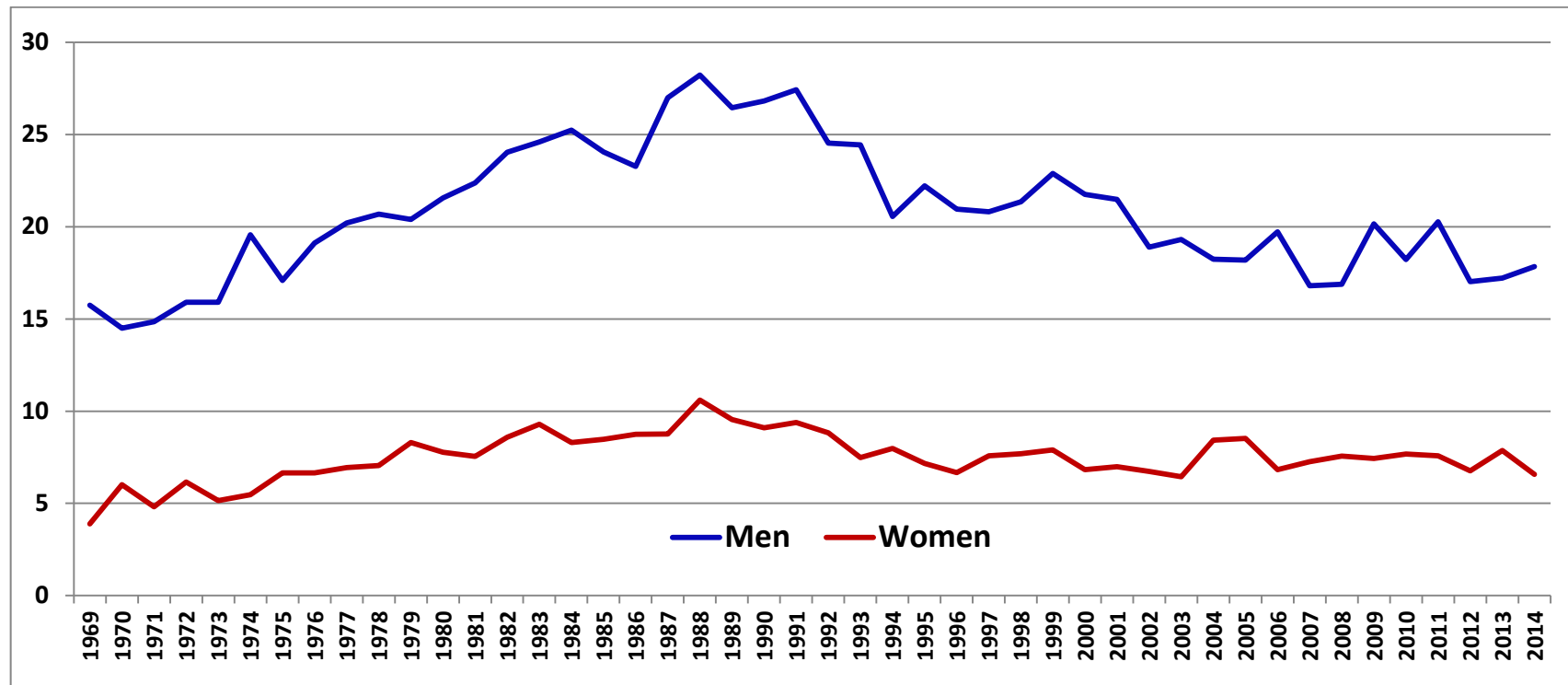
(Data of selected years were presented here in order to give an overview)

Year	1970	1975	1980	1985	1990	1995	2000	2005	2010	2011	2012	2013	2014
Men	231	283	372	429	488	411	414	360	386	436	372	382	401
Women	98	113	138	156	171	137	134	173	164	164	148	174	147
Both	329	396	510	585	659	548	548	533	550	600	520	556	548

### Number of Suicide Deaths by Sex and Calendar Year from 1969 to 2014



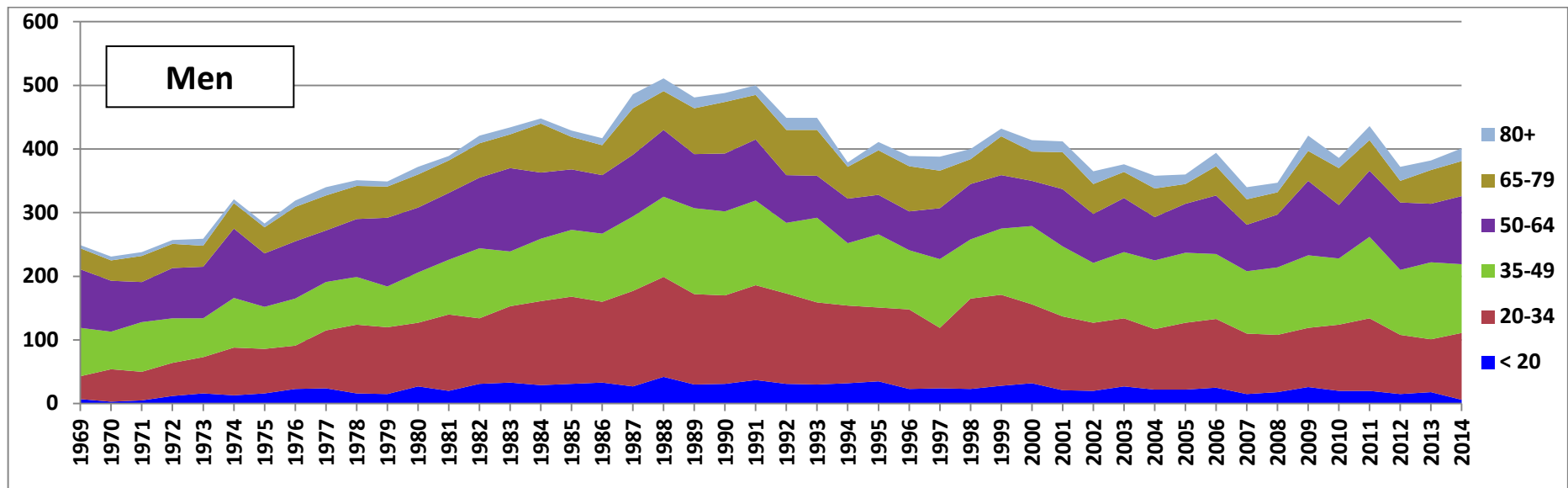
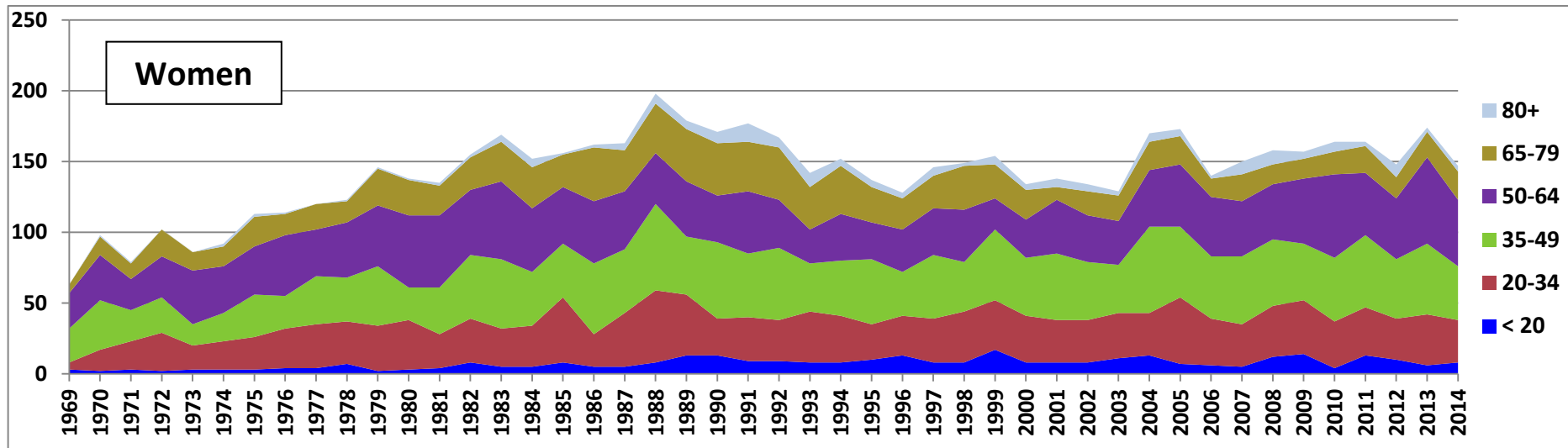
## Suicide Mortality by Sex from the year 1969 through 2014 (per 100 000 population 10+ years old)



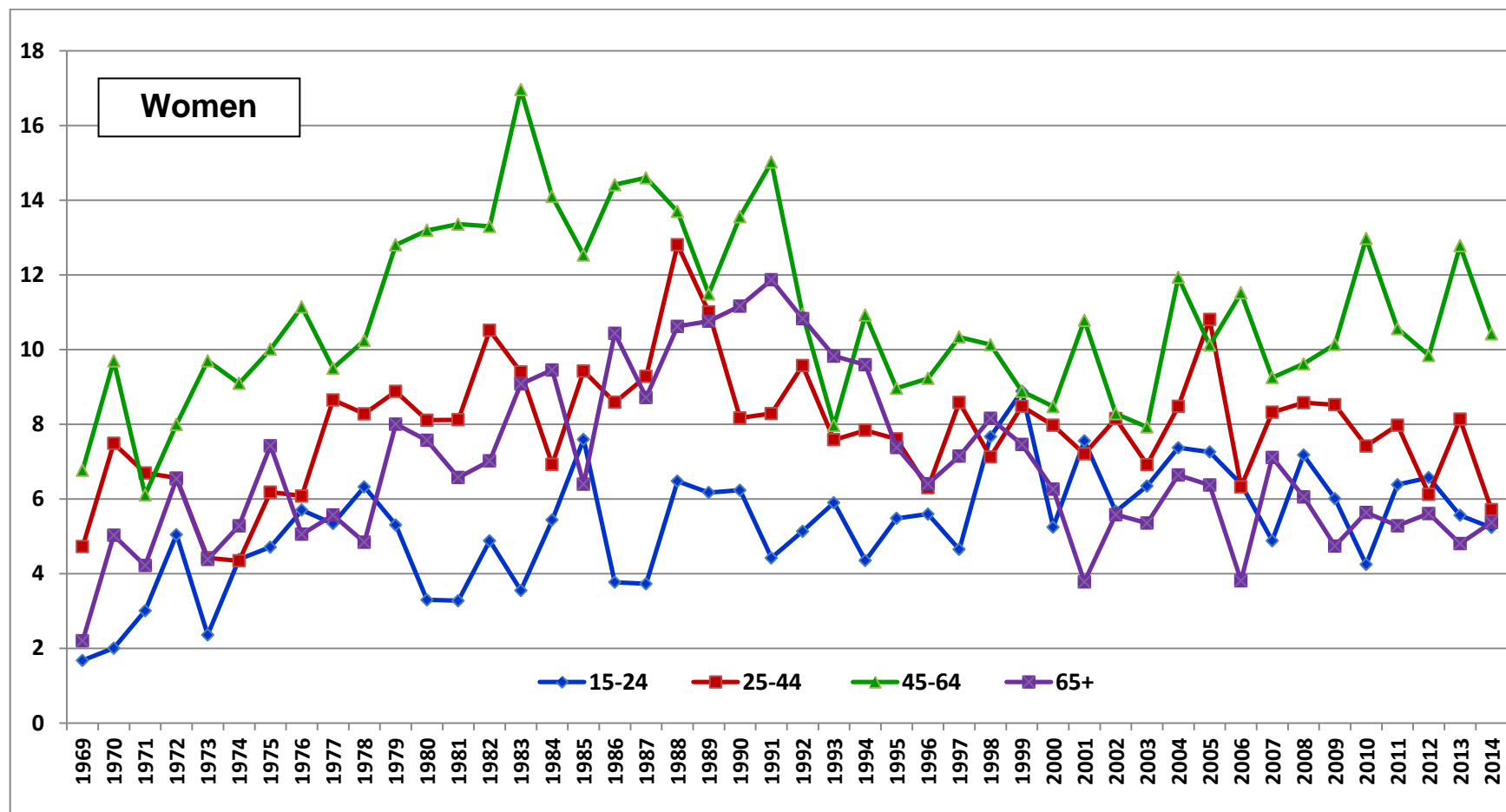
## Number of Suicide Deaths by Sex and Age-group, Selected Years from 1970 to 2014

Age group	1970	1975	1980	1985	1990	1995	2000	2005	2010	2011	2012	2013	2014
<b>Women</b>													
<10 years old	0	0	0	0	0	0	0	0	0	1	0	0	0
10-19 years old	2	3	3	8	13	10	8	7	4	12	10	6	8
20-34 years old	14	23	35	46	26	25	33	47	33	34	29	36	30
35-49 years old	35	30	23	38	54	46	41	50	45	51	42	50	38
50-64 years old	32	33	50	40	33	26	27	44	59	45	43	61	47
65-79 years old	13	21	25	23	37	25	21	20	16	18	15	18	20
>= 80 years old	1	1	1	1	8	5	4	5	7	3	9	3	4
<b>In total</b>	<b>97</b>	<b>111</b>	<b>137</b>	<b>156</b>	<b>171</b>	<b>137</b>	<b>134</b>	<b>173</b>	<b>164</b>	<b>164</b>	<b>148</b>	<b>174</b>	<b>147</b>
<b>Menn</b>													
<10 years old	0	0	0	0	0	0	0	0	0	0	0	0	0
10-19 years old	7	16	27	31	31	35	32	22	20	20	15	18	6
20-34 years old	36	70	100	137	139	116	124	105	104	114	93	83	105
35-49 years old	76	66	78	105	132	115	123	110	104	128	102	121	108
50-64 years old	93	84	101	94	91	62	71	77	84	104	106	92	107
65-79 years old	33	41	52	51	81	70	46	31	58	48	34	53	55
>= 80 years old	5	6	12	10	14	13	18	15	16	22	22	15	20
<b>In total</b>	<b>250</b>	<b>283</b>	<b>370</b>	<b>428</b>	<b>488</b>	<b>411</b>	<b>414</b>	<b>360</b>	<b>386</b>	<b>436</b>	<b>372</b>	<b>382</b>	<b>401</b>

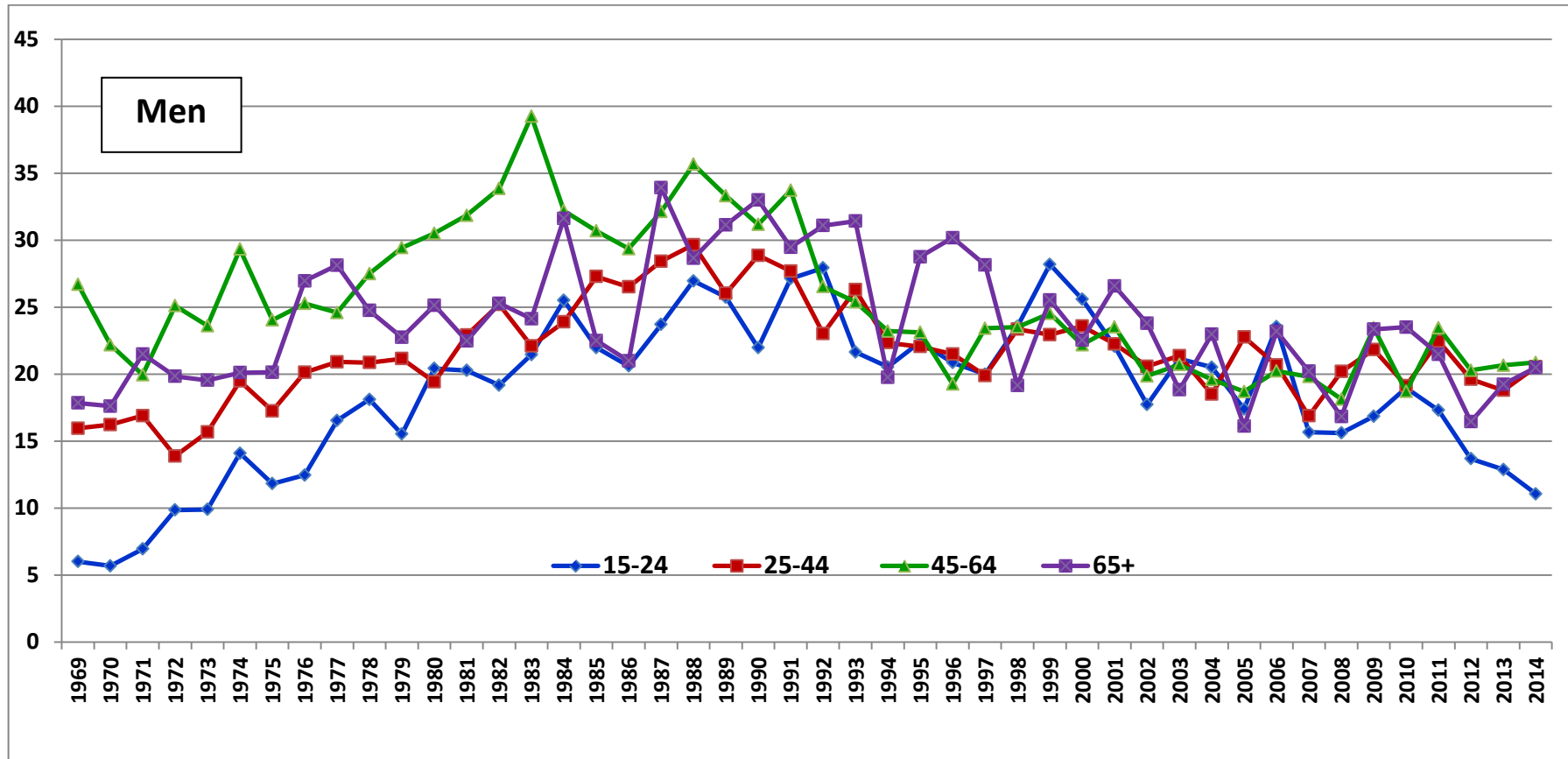
## Number of Suicide Deaths by Age-group from the Year 169 to 2014, Stratified by Sex



## Age-specific Suicide Mortality in Women, from the Year 1969 to 2014 (per 100 000 population)



## Age-specific Suicide Mortality in Men, from the Year 1969 to 2014 (per 100 000 population)



## Number of Suicide Deaths in Specific Counties in Norway, Selected Years from 1986 to 2014

County	1986	1991	1996	2001	2006	2010	2011	2012	2013	2014
All counties	579	677	517	550	534	550	600	520	556	548
Østfold	29	33	26	27	23	33	36	26	45	26
Akershus	50	61	54	52	57	51	51	53	59	61
Oslo	86	86	66	61	61	74	79	66	74	65
Hedmark	29	42	23	30	31	31	22	28	21	29
Oppland	33	27	23	26	22	27	27	24	24	23
Buskerud	39	43	29	39	39	30	35	32	27	33
Vestfold	28	43	25	31	28	40	41	33	36	24
Telemark	15	34	15	26	23	17	30	29	32	21
Aust-Agder	13	9	11	16	13	10	15	14	10	16
Vest-Agder	24	25	9	15	17	20	20	18	2	15
Rogaland	30	37	40	45	59	48	49	42	35	49
Hordaland	40	52	47	45	40	53	55	48	43	57
Sogn og Fjordane	15	9	12	7	8	7	9	6	8	8
Møre og Romsdal	22	33	24	30	22	23	19	19	25	18
Sør-Trøndelag	45	44	36	28	27	26	38	21	29	34
Nord-Trøndelag	21	23	10	11	14	11	10	15	15	16
Nordland	25	38	28	30	25	24	32	31	30	23
Troms	24	19	23	11	13	11	18	9	1	13
Finnmark	11	16	15	18	12	14	13	6	3	7
Abroad/unkown	-	3	1	2	-	-	1	-	-	-

## Suicide Mortality of Selected years by County, Standardized by European Standard Population (per 100 000 population)

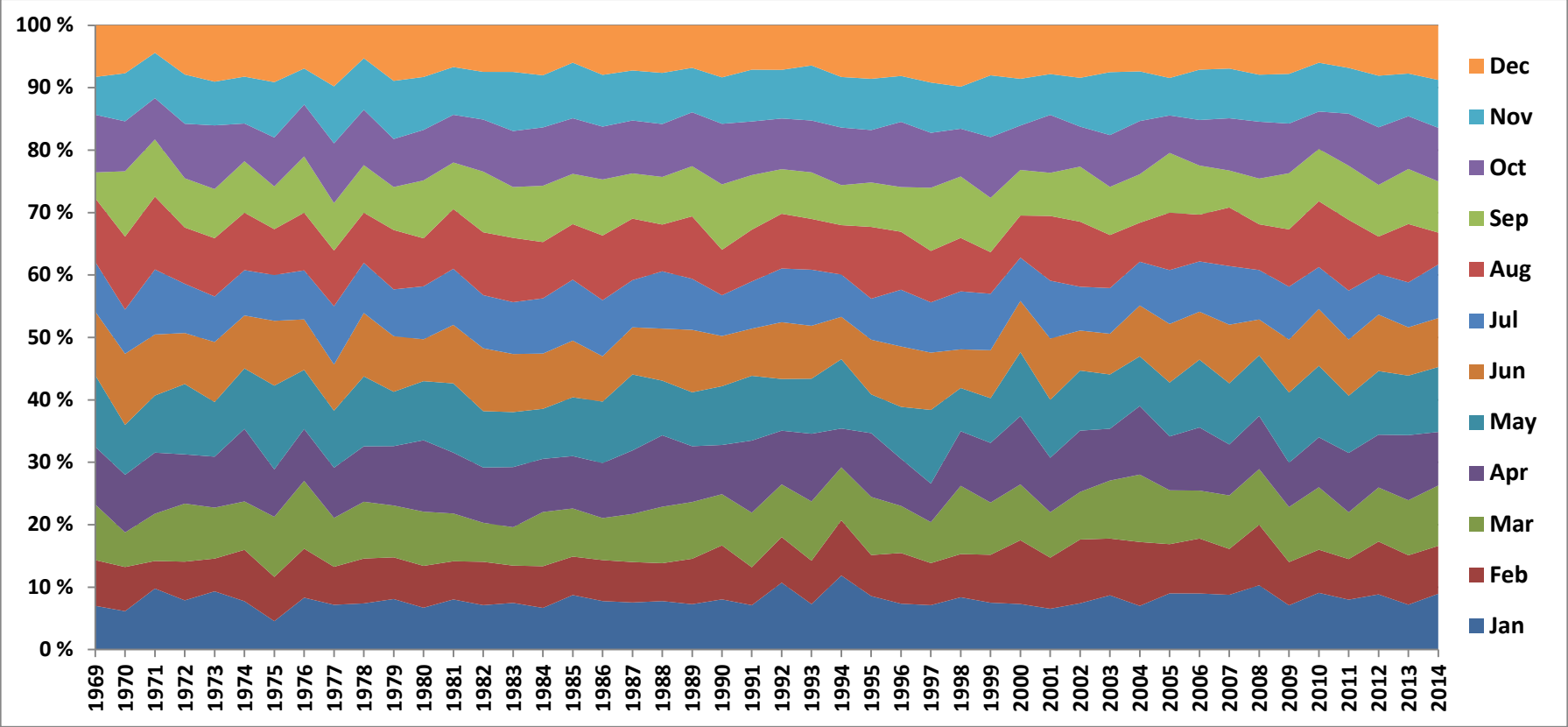
County name	1970	1975	1980	1985	1990	1995	2000	2005	2010	2012	2013	2014
Østfold	8.9	13.5	11.1	17.8	18.2	14.1	11.4	10.4	11.8	8.8	15.1	8.5
Akershus	8.9	14.7	17.1	18.7	13.8	9.8	10.1	10.1	9.2	9.3	9.9	10.2
Oslo	11.3	14.4	19.6	17.4	21	17.7	16.1	13.2	12.1	9.9	11.8	9.7
Hedmark	14.7	15.5	13.9	14.3	16.2	12.9	12.8	11.3	14.7	14.9	10	14.1
Oppland	7.8	14.6	12.5	22.1	19.3	13.8	13.4	14.2	13.8	11.1	11.6	10.6
Buskerud	13.1	9.5	13.4	18.4	20.4	13.2	15.7	14.8	10.7	11	9.9	11
Vestfold	9.5	13.6	12.2	12	19.3	12.2	11.4	13	17.1	13.2	14.7	14.3
Telemark	10.1	9.6	7.7	9.4	18.1	12.5	14.8	15.1	9.7	16.1	17.6	11.9
Aust-Agder	10.6	6.8	9.9	17.6	12.5	13.6	13.1	15.9	9.5	12.7	9.3	14.2
Vest-Agder	11.9	11.3	14.6	17.1	17.8	11.7	6.1	9	12.2	10.1	14.4	8.2
Rogaland	6.5	6.5	15.4	11	9.3	10.9	13.4	10.6	11.2	9	7.5	10.4
Hordaland	8.4	6.5	13.1	11.9	9.7	11.9	11.9	10.3	10.8	9.8	8.5	10.7
Sogn og Fjordane	9.8	9.5	8.3	18.6	10.2	8.7	9.1	6.8	6.2	5.7	7.4	6.8
Møre og Romsdal	6.6	7.2	8.7	4.7	6.6	11.7	10.3	6.6	9.2	7.4	9	6.7
Sør-Trøndelag	6.9	8.3	9.4	11.9	15.8	8.5	11	10.7	8.6	6.9	8.8	10.4
Nord-Trøndelag	5.8	12.4	12.2	13	16.4	10.2	6.2	7.5	8.5	11.2	11.6	11.5
Nordland	9.3	7.8	16.8	15.6	17.8	12.2	11.3	9.8	9.8	12.9	12.7	8.9
Troms	12.9	11.2	10.5	8.8	12.7	8.8	9.3	12.8	6.8	5.7	9.2	7.6
Finmark	3.7	10.6	17.6	22.7	11.8	13.2	13	16.5	19.2	9	3.5	8.1
<b>Total</b>	<b>9</b>	<b>10.3</b>	<b>12.8</b>	<b>14.2</b>	<b>15.1</b>	<b>12.2</b>	<b>12</b>	<b>11.3</b>	<b>10.9</b>	<b>9.9</b>	<b>10.6</b>	<b>10.2</b>



## Monthly Distribution of Suicide Deaths, Selected Years from 1970 to 2014

Month	1970	1975	1980	1985	1990	1995	2000	2005	2010	2011	2012	2013	2014
January	20	18	34	51	53	47	40	48	50	48	46	40	49
February	23	28	34	36	57	36	56	42	38	39	44	44	42
March	18	38	44	45	54	51	49	46	55	45	45	49	53
April	30	30	58	49	52	56	60	46	44	57	44	57	47
May	26	53	48	55	62	34	56	46	63	55	53	53	57
Jun	37	41	34	53	53	48	45	50	50	54	47	43	43
July	23	29	43	57	43	36	38	46	37	47	34	40	47
August	38	29	39	52	48	63	37	49	58	68	31	52	28
September	34	27	47	47	69	39	40	51	46	52	43	49	45
October	26	31	41	52	64	46	39	32	33	50	48	47	47
November	25	35	43	52	49	45	41	32	43	44	43	38	42
December	25	36	42	35	55	47	47	45	33	41	42	43	48
<b>Total</b>	<b>325</b>	<b>395</b>	<b>507</b>	<b>584</b>	<b>659</b>	<b>548</b>	<b>548</b>	<b>533</b>	<b>550</b>	<b>600</b>	<b>520</b>	<b>556</b>	<b>548</b>

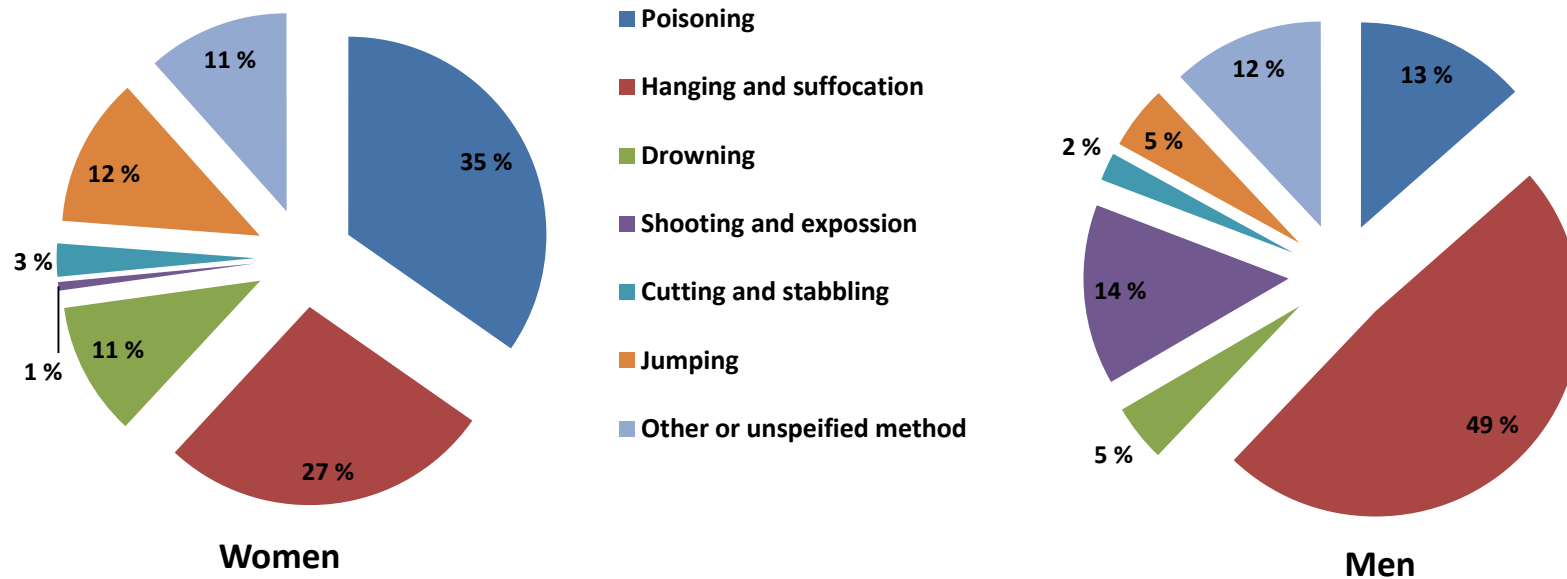
Monthly Distribution of Suicides from the year 1969 to 2014, in Percentage



## Number of Suicides by Specific Methods in Women and Men, Selected Years 1970-2014.

Method of suicide	1970	1975	1980	1985	1990	1995	2000	2005	2010	2011	2012	2013	2014
<b>Women</b>													
Poisoning	41	46	54	61	64	52	38	63	69	57	59	67	51
Hanging and suffocation	15	22	29	31	31	29	47	55	55	62	41	65	40
Drowning	27	23	28	33	34	28	19	15	17	13	18	15	16
Shooting and explosion	3	1	4	10	6	6	3	3	2	3	4	2	1
Cutting and stabbing	3	5	4	2	2	3	6	5	5	5	5	4	4
Jumping	6	10	8	9	17	12	14	14	10	14	13	4	18
Other or unspecified method	2	5	10	10	17	7	7	18	6	10	8	17	17
<b>Total</b>	<b>97</b>	<b>112</b>	<b>137</b>	<b>156</b>	<b>171</b>	<b>137</b>	<b>134</b>	<b>173</b>	<b>164</b>	<b>164</b>	<b>148</b>	<b>174</b>	<b>147</b>
<b>Men</b>													
Poisoning	35	58	67	70	68	51	35	54	41	66	41	49	54
Hanging and suffocation	66	88	105	137	139	141	179	141	176	201	161	176	195
Drowning	19	21	21	17	31	18	18	15	12	14	10	15	18
Shooting and explosion	79	90	121	142	157	136	109	79	82	67	79	70	57
Cutting and stabbing	11	8	10	10	22	8	9	8	12	11	12	16	9
Jumping	6	8	11	14	14	14	18	15	16	23	27	20	20
Other or unspecified method	12	10	35	38	57	43	46	48	47	54	42	36	48
<b>Total</b>	<b>228</b>	<b>283</b>	<b>370</b>	<b>428</b>	<b>488</b>	<b>411</b>	<b>412</b>	<b>360</b>	<b>386</b>	<b>436</b>	<b>372</b>	<b>382</b>	<b>401</b>

## Suicides by Specific Methods in Women and Men. Percentage Distribution in the Year 2014



## Methods for Suicide by Sex in Selected Years, in Percentage

<u>Women</u>	1975	1985	1995	2005	2014
Poisoning	20.49	16.36	12.41	15.00	13.47
Hanging and suffocation	31.10	32.01	34.31	39.17	48.63
Drowning	7.42	3.97	4.38	4.17	4.49
Shooting and explosion	31.80	33.18	33.09	21.94	14.21
Cutting and stabbing	2.83	2.34	1.95	2.22	2.24
Jumping	2.83	3.27	3.41	4.17	4.99
Other or unspecified method	3.53	8.88	10.46	13.33	11.97
<b>Total</b>	<b>100.00</b>	<b>100.00</b>	<b>100.00</b>	<b>100.00</b>	<b>100.00</b>
<u>Men</u>					
Poisoning	41.07	39.10	37.96	36.42	34.69
Hanging and suffocation	19.64	19.87	21.17	31.79	27.21
Drowning	20.54	21.15	20.44	8.67	10.88
Shooting and explosion	0.89	6.41	4.38	1.73	0.68
Cutting and stabbing	4.46	1.28	2.19	2.89	2.72
Jumping	8.93	5.77	8.76	8.09	12.24
Other or unspecified method	4.46	6.41	5.11	10.40	11.56
<b>Total</b>	<b>100.00</b>	<b>100.00</b>	<b>100.00</b>	<b>100.00</b>	<b>100.00</b>