

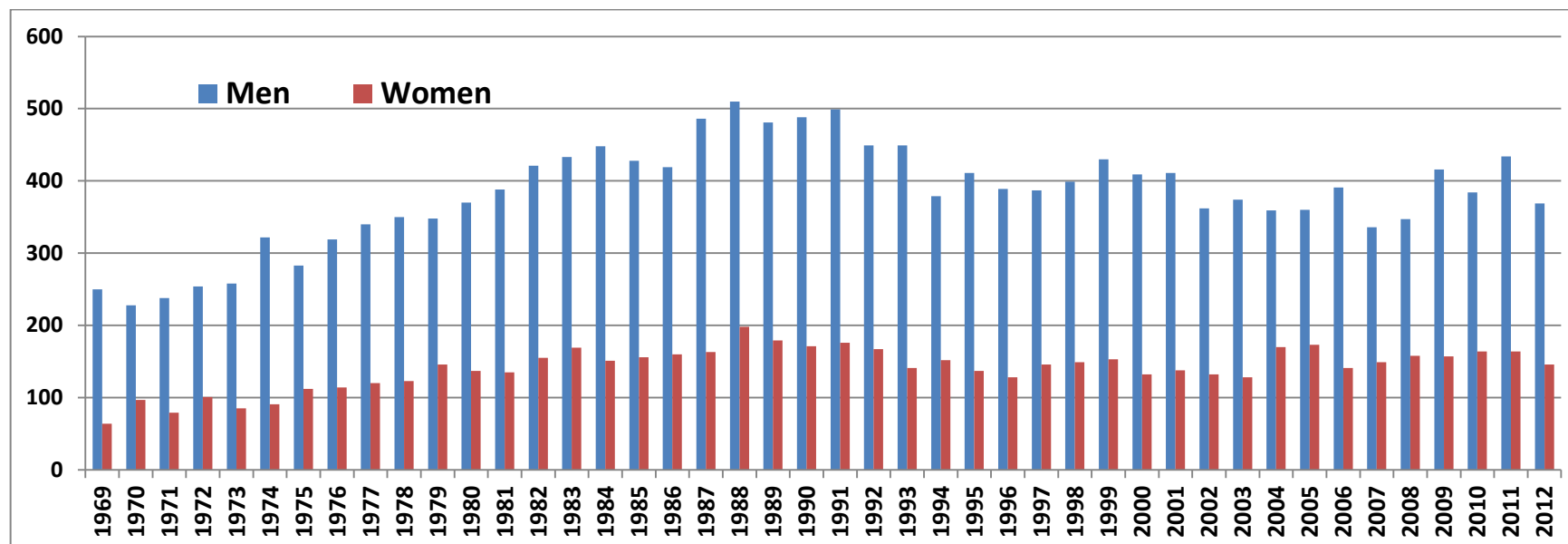
In the year 2012, there were in total 515 suicides, including 369 men and 146 women, which corresponds to a rate of 14.5 suicides per 100 000 men and 5.8 suicides per 100 000 women in Norway.

Number of Suicide Deaths by Sex and Calendar Time from 1970 to 2012

(Data of selected years were presented here in order to give an overview)

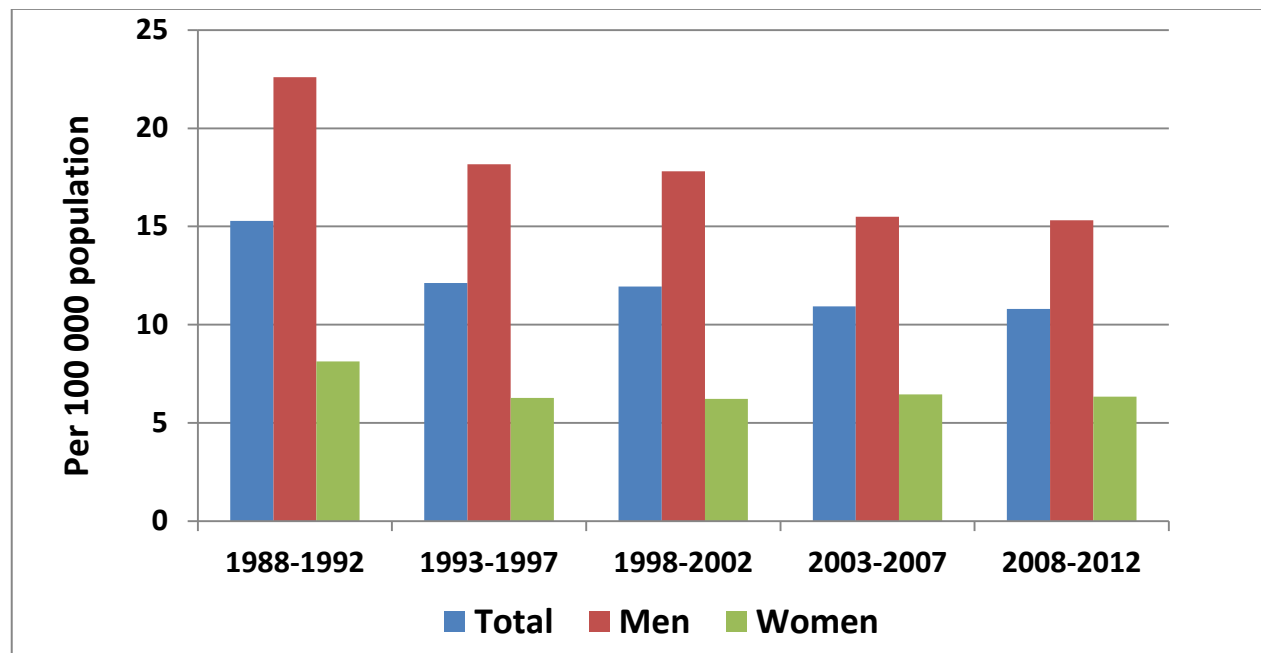
| Year | 1970 | 1975 | 1980 | 1985 | 1990 | 1995 | 2000 | 2005 | 2010 | 2011 | 2012 |
|-------|------|------|------|------|------|------|------|------|------|------|------|
| Total | 325 | 395 | 507 | 584 | 659 | 548 | 541 | 533 | 548 | 598 | 515 |
| Men | 228 | 283 | 370 | 428 | 488 | 411 | 409 | 360 | 384 | 434 | 369 |
| Women | 97 | 112 | 137 | 156 | 171 | 137 | 132 | 173 | 164 | 164 | 146 |

Number of Suicide Deaths by Sex and Calendar Year from 1969 to 2012



Standardized Suicide Mortality by Sex and Time Period (per 100 000 population)

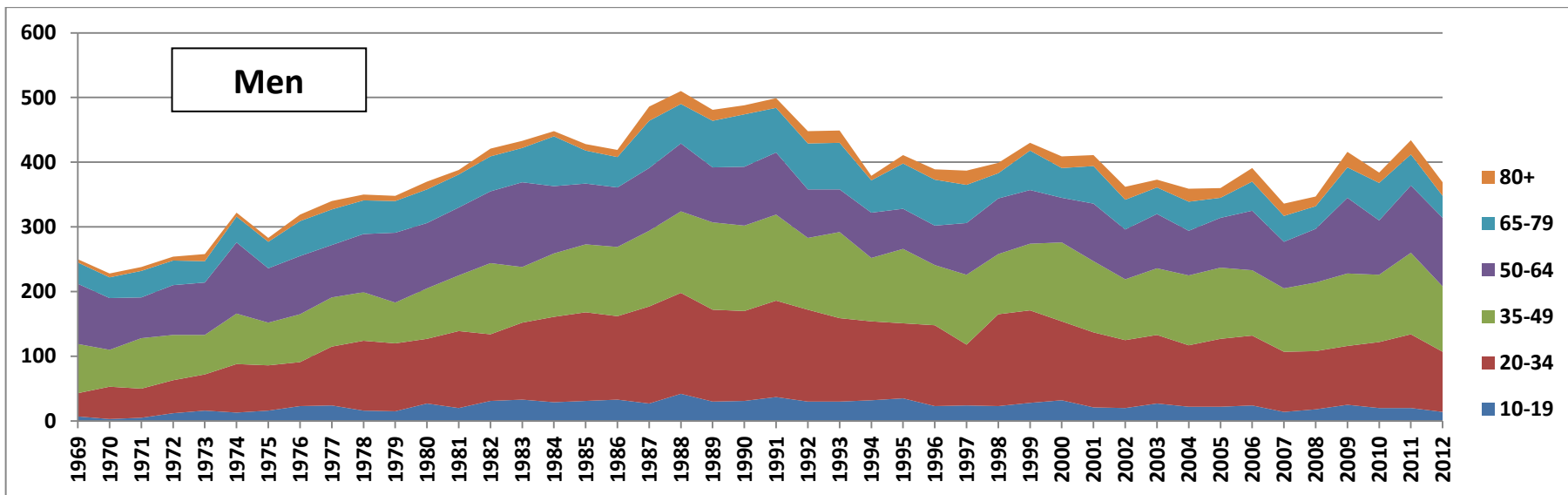
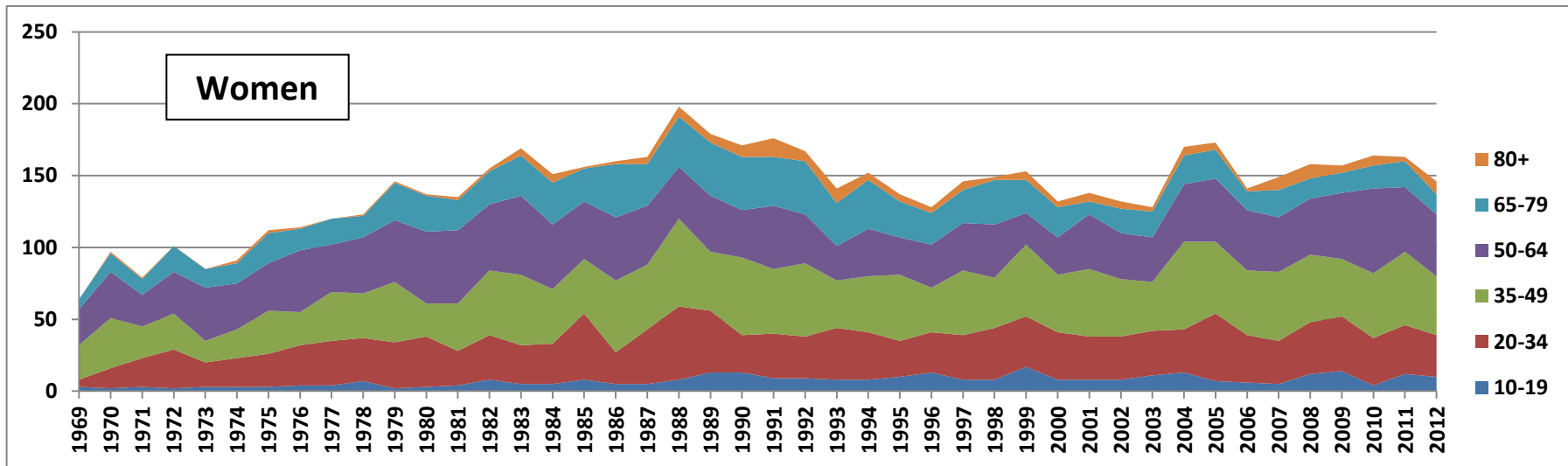
| Time Period | 1988-1992 | 1993-1997 | 1998-2002 | 2003-2007 | 2008-2012 |
|-------------|-----------|-----------|-----------|-----------|-----------|
| Total | 15,3 | 12,1 | 11,9 | 10,9 | 10,8 |
| Men | 22,6 | 18,2 | 17,8 | 15,5 | 15,3 |
| Women | 8,1 | 6,3 | 6,2 | 6,4 | 6,3 |



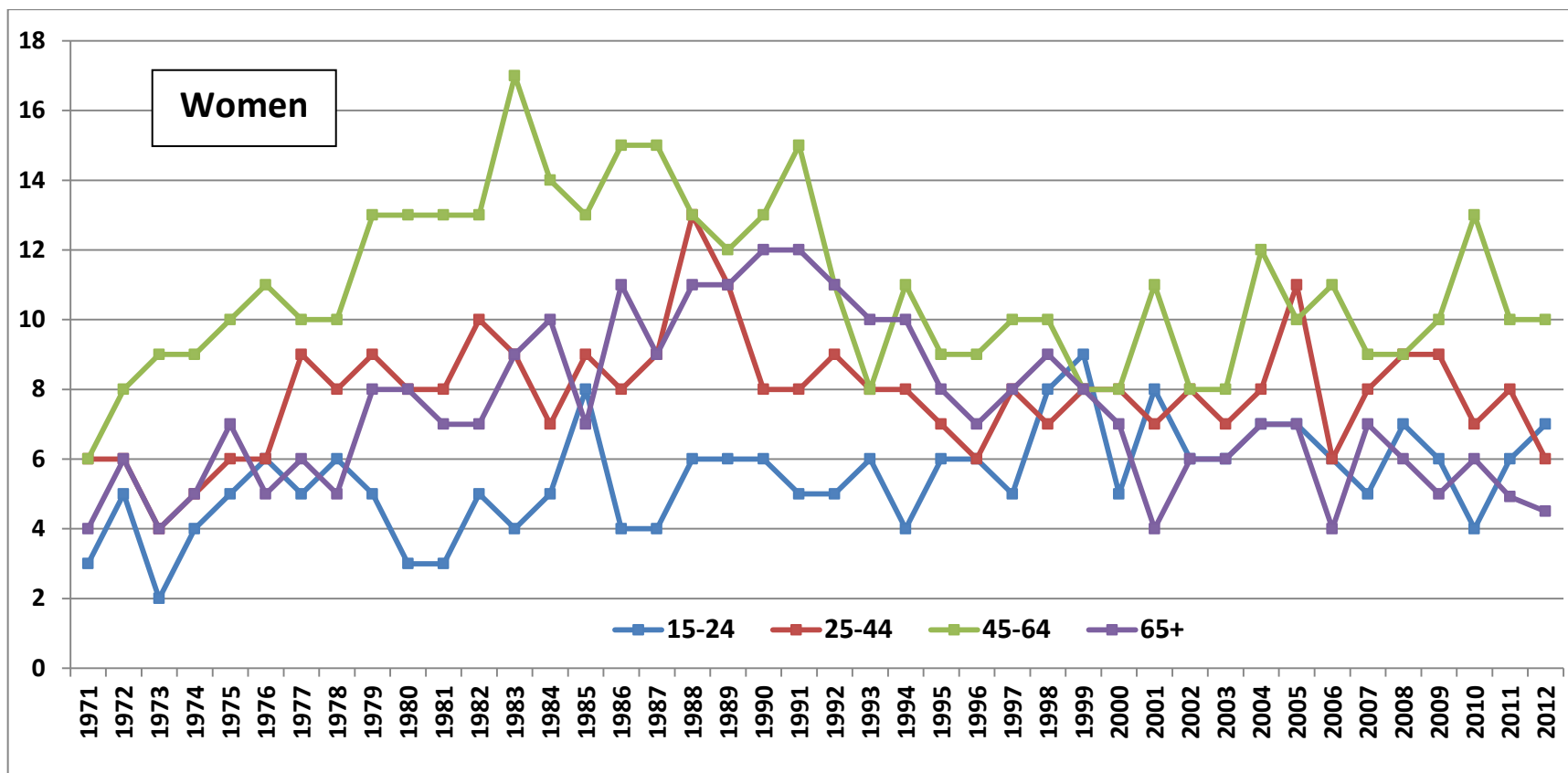
Number of Suicide Deaths by Sex and Age-group, Selected Years from 1970 to 2012

| | 1970 | 1975 | 1980 | 1985 | 1990 | 1995 | 2000 | 2005 | 2010 | 2011 | 2012 |
|------------------|------------|------------|------------|------------|------------|------------|------------|------------|------------|------------|------------|
| Women | | | | | | | | | | | |
| <10 years old | 0 | 0 | 0 | 0 | 0 | 0 | 0 | 0 | 0 | 1 | 0 |
| 10-19 years old | 2 | 3 | 3 | 8 | 13 | 10 | 8 | 7 | 4 | 12 | 10 |
| 20-34 years old | 14 | 23 | 35 | 46 | 26 | 25 | 33 | 47 | 33 | 34 | 29 |
| 35-49 years old | 35 | 30 | 23 | 38 | 54 | 46 | 40 | 50 | 45 | 51 | 41 |
| 50-64 years old | 32 | 33 | 50 | 40 | 33 | 26 | 26 | 44 | 59 | 45 | 43 |
| 65-79 years old | 13 | 21 | 25 | 23 | 37 | 25 | 21 | 20 | 16 | 18 | 14 |
| >= 80 years old | 1 | 1 | 1 | 1 | 8 | 5 | 4 | 5 | 7 | 3 | 9 |
| In total | 97 | 111 | 137 | 156 | 171 | 137 | 132 | 173 | 164 | 164 | 146 |
| Men | | | | | | | | | | | |
| <10 years old | 0 | 0 | 0 | 0 | 0 | 0 | 0 | 0 | 0 | 0 | 0 |
| 10-19 years old | 7 | 16 | 27 | 31 | 31 | 35 | 32 | 22 | 20 | 20 | 14 |
| 20-34 years old | 36 | 70 | 100 | 137 | 139 | 116 | 112 | 105 | 102 | 114 | 93 |
| 35-49 years old | 76 | 66 | 78 | 105 | 132 | 115 | 112 | 110 | 104 | 126 | 101 |
| 50-64 years oldr | 93 | 84 | 101 | 94 | 91 | 62 | 69 | 77 | 84 | 104 | 106 |
| 65-79 years old | 33 | 41 | 52 | 51 | 81 | 70 | 46 | 31 | 58 | 48 | 34 |
| >= 80 years old | 5 | 6 | 12 | 10 | 14 | 13 | 18 | 15 | 16 | 22 | 21 |
| In total | 250 | 283 | 370 | 428 | 488 | 411 | 389 | 360 | 384 | 434 | 369 |

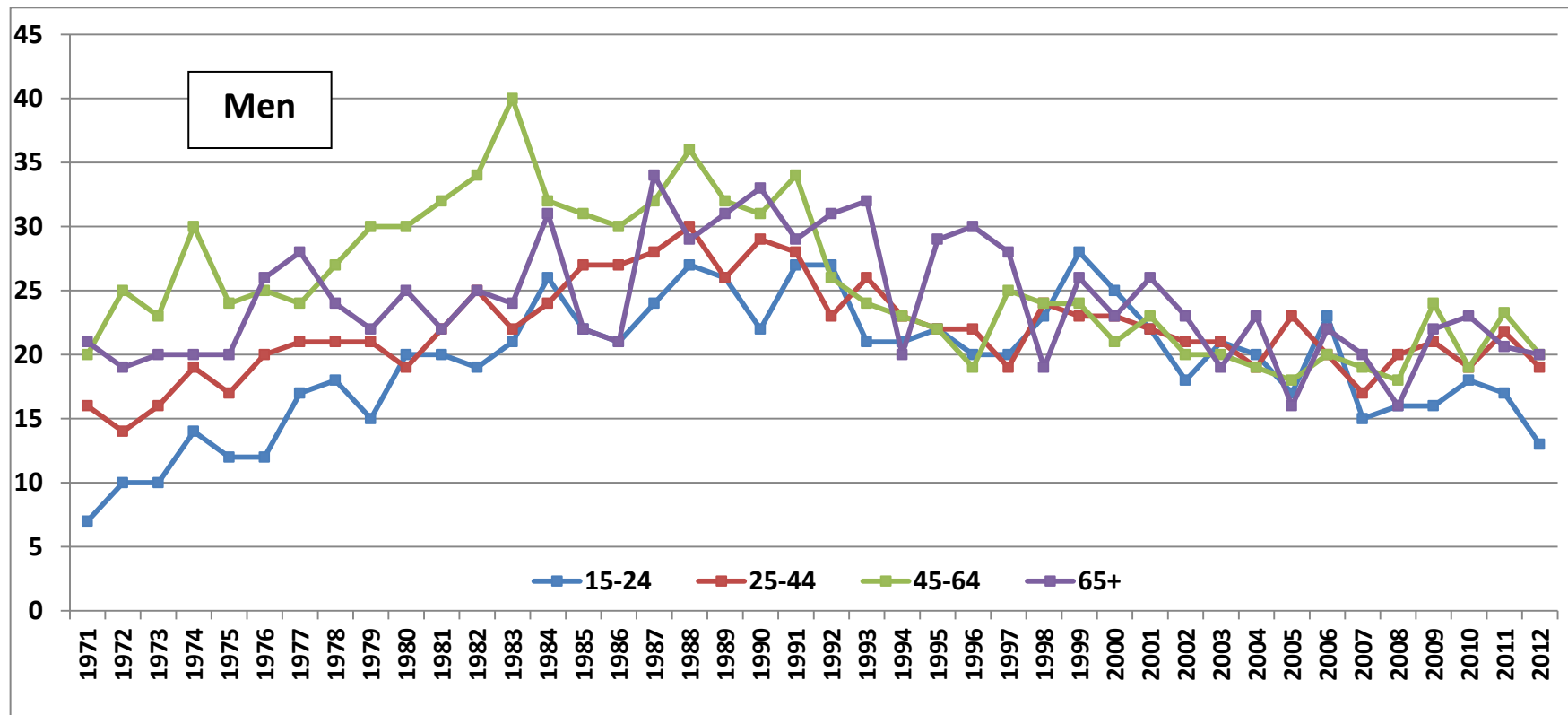
Number of Suicide Deaths by Age-group from the Year 169 to 2012, Stratified by Sex



Age-specific Suicide Mortality in Women, from the Year 1969 to 2012 (per 100 000 population)



Age-specific Suicide Mortality in Men, from the Year 1969 to 2012 (per 100 000 population)



Number of Suicide Deaths in Specific Counties in Norway, Selected Years from 1986 to 2012

| County | 1986 | 1991 | 1996 | 2001 | 2006 | 2007 | 2008 | 2009 | 2010 | 2011 | 2012 |
|------------------------------|------------|------------|------------|------------|------------|------------|------------|------------|------------|------------|------------|
| 01-99 in total | 579 | 675 | 517 | 549 | 532 | 485 | 505 | 573 | 548 | 598 | 515 |
| 01 Østfold | 29 | 33 | 26 | 27 | 23 | 32 | 28 | 40 | 32 | 36 | 25 |
| 02 Akershus | 50 | 63 | 54 | 52 | 57 | 46 | 50 | 54 | 51 | 50 | 52 |
| 03 Oslo | 86 | 85 | 66 | 61 | 61 | 61 | 78 | 58 | 73 | 80 | 65 |
| 04 Hedmark | 29 | 42 | 23 | 30 | 31 | 20 | 21 | 30 | 31 | 22 | 28 |
| 05 Oppland | 33 | 28 | 23 | 26 | 21 | 23 | 30 | 25 | 27 | 27 | 23 |
| 06 Buskerud | 40 | 44 | 29 | 39 | 39 | 27 | 26 | 41 | 30 | 33 | 32 |
| 07 Vestfold | 28 | 43 | 25 | 31 | 28 | 30 | 34 | 41 | 40 | 41 | 33 |
| 08 Telemark | 15 | 34 | 15 | 26 | 23 | 18 | 19 | 28 | 17 | 30 | 29 |
| 09 Aust-Agder | 14 | 9 | 11 | 16 | 13 | 12 | 16 | 14 | 10 | 15 | 14 |
| 10 Vest-Agder | 24 | 24 | 9 | 15 | 17 | 19 | 15 | 24 | 20 | 20 | 18 |
| 11 Rogaland | 29 | 37 | 40 | 45 | 59 | 47 | 43 | 47 | 48 | 48 | 42 |
| 12 Hordaland | 40 | 52 | 48 | 47 | 39 | 48 | 37 | 45 | 53 | 57 | 48 |
| 14 Sogn og Fjordane | 15 | 9 | 12 | 7 | 8 | 15 | 6 | 7 | 7 | 9 | 6 |
| 15 Møre og Romsdal | 22 | 33 | 24 | 30 | 23 | 25 | 15 | 19 | 23 | 19 | 19 |
| 16 Sør-Trøndelag | 45 | 44 | 36 | 28 | 27 | 23 | 24 | 24 | 26 | 38 | 21 |
| 17 Nord-Trøndelag | 21 | 22 | 10 | 10 | 14 | 10 | 9 | 18 | 11 | 10 | 15 |
| 18 Nordland | 24 | 37 | 28 | 30 | 24 | 13 | 29 | 21 | 24 | 32 | 30 |
| 19 Troms Romsa | 24 | 19 | 23 | 11 | 13 | 12 | 15 | 23 | 11 | 18 | 9 |
| 20 Finnmark Finnmarku | 11 | 17 | 15 | 18 | 12 | 4 | 10 | 13 | 14 | 13 | 6 |
| 25 Abroad | 0 | 0 | 0 | 0 | 0 | 0 | 0 | 0 | 0 | 0 | 0 |
| 99 Unknown | 0 | 0 | 0 | 0 | 0 | 0 | 0 | 1 | 0 | 0 | 0 |

Standardized Suicide Mortality in Specific Counties in Norway (per 100 000 population)

| County | 1988-1992 | 1993-1997 | 1998-2002 | 2003-2007 | 2008-2012 |
|-----------------------|-------------|-------------|-------------|-------------|-------------|
| 01-99 in total | 15,3 | 12,1 | 11,9 | 10,9 | 10,8 |
| 01 Østfold | 14,8 | 11,7 | 9,8 | 11,1 | 11,6 |
| 02 Akershus | 14,7 | 11,2 | 10,9 | 9,2 | 9,4 |
| 03 Oslo | 20,1 | 13,8 | 14,1 | 10,7 | 11,4 |
| 04 Hedmark | 17,7 | 12,1 | 15,1 | 13,8 | 13,0 |
| 05 Oppland | 18,2 | 14,8 | 12,6 | 11,9 | 13,7 |
| 06 Buskerud | 15,9 | 12,2 | 13,7 | 13,5 | 11,7 |
| 07 Vestfold | 18,1 | 15,2 | 14,6 | 12,9 | 15,8 |
| 08 Telemark | 18,4 | 13,3 | 14,3 | 11,9 | 13,9 |
| 09 Aust-Agder | 15,0 | 12,0 | 11,7 | 13,3 | 12,5 |
| 10 Vest-Agder | 18,6 | 10,1 | 11,5 | 12,2 | 11,3 |
| 11 Rogaland | 11,2 | 10,8 | 10,7 | 11,2 | 10,5 |
| 12 Hordaland | 10,9 | 11,2 | 11,1 | 10,2 | 9,8 |
| 14 Sogn og Fjordane | 10,8 | 9,9 | 7,4 | 9,2 | 6,6 |
| 15 Møre og Romsdal | 10,7 | 9,6 | 9,3 | 9,3 | 7,4 |
| 16 Sør-Trøndelag | 15,2 | 11,8 | 11,5 | 10,3 | 8,9 |
| 17 Nord-Trøndelag | 16,7 | 10,3 | 11,6 | 10,0 | 9,5 |
| 18 Nordland | 14,0 | 12,7 | 11,1 | 9,9 | 11,4 |
| 19 Troms Romsa | 13,1 | 12,9 | 9,8 | 10,3 | 9,4 |
| 20 Finnmark Finnmarku | 21,4 | 16,2 | 17,5 | 12,4 | 15,5 |
| 25 Abroad | 0 | 0 | 0 | 0 | 0 |
| 99 Unknown | 0 | 0 | 0 | 0 | 0 |

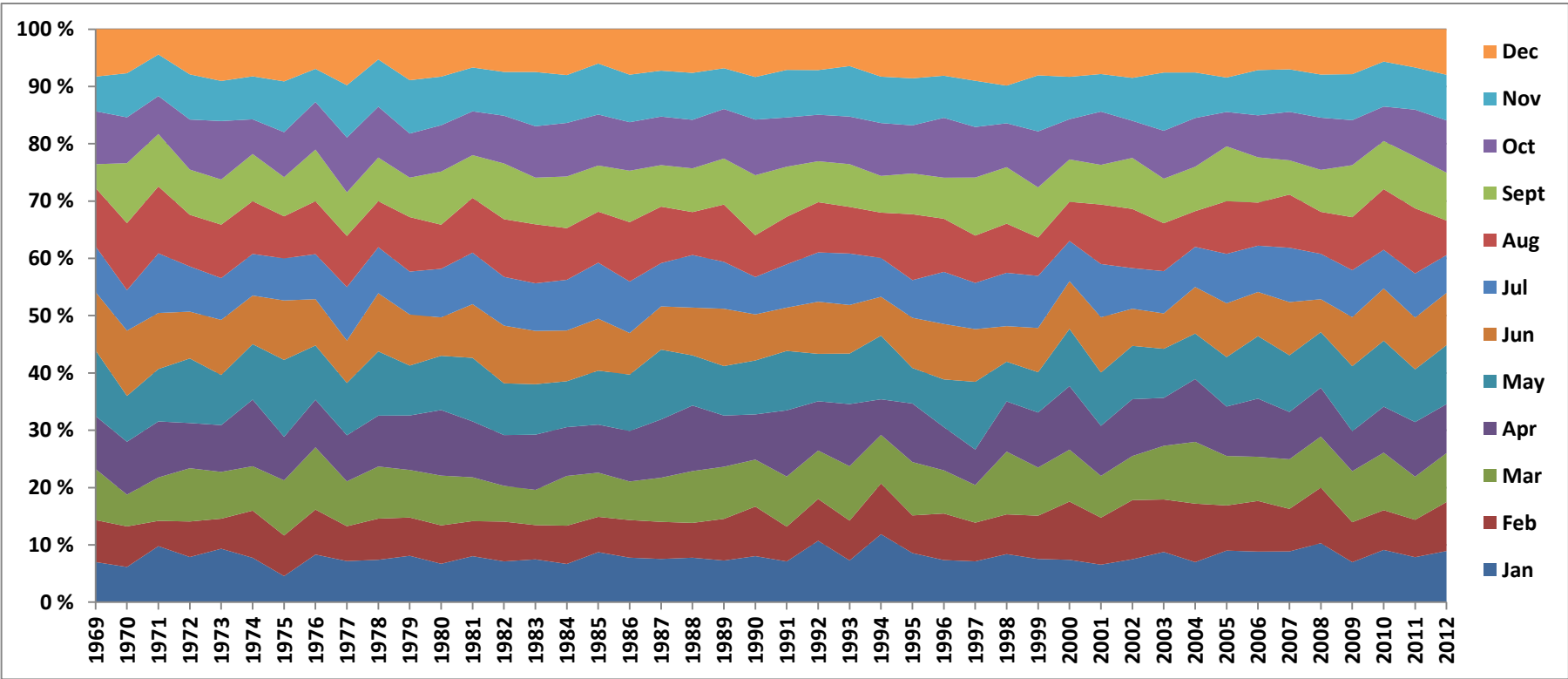
Standardized Suicide Mortality in Specific Counties in Norway, Stratified by Sex (per 100 000 population)

| County | Women | | | | | | Men | | | | |
|------------------------------|-------------|------------|------------|------------|------------|--|-------------|-------------|-------------|-------------|-------------|
| | 1988-1992 | 1993-1997 | 1998-2002 | 2003-2007 | 2008-2012 | | 1988-1992 | 1993-1997 | 1998-2002 | 2003-2007 | 2008-2012 |
| 01-99 in total | 8,12 | 6,3 | 6,2 | 6,4 | 6,3 | | 22,6 | 18,2 | 17,8 | 15,5 | 15,3 |
| 01 Østfold | 8,3 | 5,4 | 5,3 | 4,8 | 6,4 | | 21,5 | 18,2 | 14,8 | 17,6 | 16,9 |
| 02 Akershus | 8,2 | 6,3 | 5,6 | 5,3 | 5,9 | | 21,6 | 16,6 | 16, | 13,3 | 13,2 |
| 03 Oslo | 14,4 | 10,0 | 9,7 | 8,4 | 8,6 | | 26,4 | 18,3 | 18,9 | 13,4 | 14,3 |
| 04 Hedmark | 6,4 | 4,4 | 6,7 | 8,0 | 6,8 | | 29,4 | 20,0 | 23,8 | 19,8 | 19,3 |
| 05 Oppland | 9,5 | 6,5 | 6,7 | 8,0 | 7,1 | | 26,8 | 23,1 | 18,7 | 15,9 | 20,2 |
| 06 Buskerud | 5,4 | 6,1 | 6,1 | 8,2 | 4,9 | | 26,7 | 18,7 | 21,6 | 18,9 | 18,5 |
| 07 Vestfold | 9,7 | 9,0 | 6,6 | 9,3 | 11,1 | | 26,7 | 21,6 | 22,7 | 16,9 | 20,7 |
| 08 Telemark | 11,0 | 5,3 | 7,7 | 5,0 | 7,9 | | 25,8 | 21,4 | 20,8 | 18,6 | 20,3 |
| 09 Aust-Agder | 7,7 | 7,7 | 4,2 | 6,7 | 6,2 | | 22,2 | 16,8 | 18,9 | 19,9 | 18,6 |
| 10 Vest-Agder | 11,0 | 4,5 | 7,7 | 8,2 | 6,9 | | 26,3 | 15,8 | 15,3 | 16,1 | 15,6 |
| 11 Rogaland | 5,5 | 4,8 | 5,8 | 7,1 | 5,9 | | 16,8 | 16,7 | 15,5 | 15,3 | 14,9 |
| 12 Hordaland | 5,5 | 6,0 | 6,1 | 5,7 | 6,0 | | 16,4 | 16,2 | 16,3 | 14,6 | 13,5 |
| 14 Sogn og Fjordane | 5,9 | 4,7 | 3,1 | 3,9 | 4,2 | | 15,4 | 14,9 | 11,7 | 14,4 | 8,9 |
| 15 Møre og Romsdal | 5,0 | 4,6 | 3,7 | 4,6 | 3,3 | | 16,2 | 14,5 | 14,9 | 14,0 | 11,4 |
| 16 Sør-Trøndelag | 7,5 | 7,0 | 5,0 | 5,5 | 5,3 | | 22,8 | 16,7 | 18,3 | 15,2 | 12,5 |
| 17 Nord-Trøndelag | 5,1 | 3,4 | 5,9 | 6,0 | 5,7 | | 28,1 | 17,4 | 17,2 | 13,8 | 13,3 |
| 18 Nordland | 7,0 | 5,2 | 5,6 | 5,4 | 4,3 | | 20,7 | 20,3 | 16,8 | 14,3 | 18,4 |
| 19 Troms Romsa | 4,5 | 5,9 | 4,4 | 6,6 | 5,8 | | 21,5 | 20,2 | 15,1 | 13,7 | 13,1 |
| 20 Finnmark Finnmarku | 14,5 | 6,7 | 6,2 | 4,1 | 10,7 | | 27,5 | 25,0 | 27,9 | 20,3 | 20,2 |
| 25 Abroad | 0 | 0 | 0 | 0 | 0 | | 0 | 0 | 0 | 0 | 0 |
| 99 Unkown | 0 | 0 | 0 | 0 | 0 | | 0 | 0 | 0 | 0 | 0 |

Monthly Distribution of Suicide Deaths, Selected Years from 1970 to 2012

| Month | 1970 | 1975 | 1980 | 1985 | 1990 | 1995 | 2000 | 2005 | 2010 | 2011 | 2012 |
|-----------------|------------|------------|------------|------------|------------|------------|------------|------------|------------|------------|------------|
| January | 20 | 18 | 34 | 51 | 53 | 47 | 40 | 48 | 50 | 47 | 46 |
| February | 23 | 28 | 34 | 36 | 57 | 36 | 55 | 42 | 38 | 39 | 44 |
| March | 18 | 38 | 44 | 45 | 54 | 51 | 49 | 46 | 55 | 45 | 44 |
| April | 30 | 30 | 58 | 49 | 52 | 56 | 60 | 46 | 44 | 57 | 44 |
| May | 26 | 53 | 48 | 55 | 62 | 34 | 54 | 46 | 63 | 55 | 53 |
| June | 37 | 41 | 34 | 53 | 53 | 48 | 45 | 50 | 50 | 54 | 47 |
| July | 23 | 29 | 43 | 57 | 43 | 36 | 38 | 46 | 37 | 46 | 34 |
| August | 38 | 29 | 39 | 52 | 48 | 63 | 37 | 49 | 58 | 68 | 31 |
| September | 34 | 27 | 47 | 47 | 69 | 39 | 40 | 51 | 46 | 54 | 43 |
| October | 26 | 31 | 41 | 52 | 64 | 46 | 38 | 32 | 33 | 49 | 47 |
| November | 25 | 35 | 43 | 52 | 49 | 45 | 40 | 32 | 43 | 44 | 41 |
| December | 25 | 36 | 42 | 35 | 55 | 47 | 45 | 45 | 31 | 40 | 41 |
| In total | 325 | 395 | 507 | 584 | 659 | 548 | 541 | 533 | 548 | 598 | 515 |

Monthly Distribution of Suicides from the year 1969 to 2012, in Percentage



Number of Suicides by Specific Methods in Women and Men, Selected Years 1970-2012.

| | 1970 | 1975 | 1980 | 1985 | 1990 | 1995 | 2000 | 2005 | 2010 | 2011 | 2012 |
|-----------------------------|------------|------------|------------|------------|------------|------------|------------|------------|------------|------------|------------|
| Women | | | | | | | | | | | |
| Poisoning | 41 | 46 | 54 | 61 | 64 | 52 | 38 | 63 | 69 | 57 | 58 |
| Hanging and suffocation | 15 | 22 | 29 | 31 | 31 | 29 | 46 | 54 | 55 | 63 | 41 |
| Drowning | 27 | 23 | 28 | 33 | 34 | 28 | 17 | 15 | 17 | 11 | 17 |
| Shooting and explosion | 3 | 1 | 4 | 10 | 6 | 6 | 3 | 3 | 2 | 3 | 4 |
| Cutting and stabbing | 3 | 5 | 4 | 2 | 2 | 3 | 6 | 5 | 5 | 5 | 5 |
| Jumping | 6 | 10 | 8 | 9 | 17 | 12 | 14 | 14 | 10 | 14 | 13 |
| Other or unspecified method | 2 | 5 | 10 | 10 | 17 | 7 | 8 | 19 | 6 | 11 | 8 |
| Total | 97 | 112 | 137 | 156 | 171 | 137 | 132 | 173 | 164 | 164 | 146 |
| Men | | | | | | | | | | | |
| Poisoning | 35 | 58 | 67 | 70 | 68 | 51 | 35 | 54 | 40 | 64 | 41 |
| Hanging and suffocation | 66 | 88 | 105 | 137 | 139 | 141 | 177 | 141 | 175 | 204 | 160 |
| Drowning | 19 | 21 | 21 | 17 | 31 | 18 | 17 | 15 | 12 | 13 | 9 |
| Shooting and explosion | 79 | 90 | 121 | 142 | 157 | 136 | 107 | 79 | 82 | 66 | 79 |
| Cutting and stabbing | 11 | 8 | 10 | 10 | 22 | 8 | 9 | 8 | 12 | 11 | 12 |
| Jumping | 6 | 8 | 11 | 14 | 14 | 14 | 18 | 15 | 15 | 23 | 26 |
| Other or unspecified method | 12 | 10 | 35 | 38 | 57 | 43 | 46 | 48 | 48 | 53 | 42 |
| Total | 228 | 283 | 370 | 428 | 488 | 411 | 409 | 360 | 384 | 434 | 369 |

NSSF  Nasjonalt senter for
selvmordsforskning
og -forebygging

18.11.13

Kilde: ssb.no